

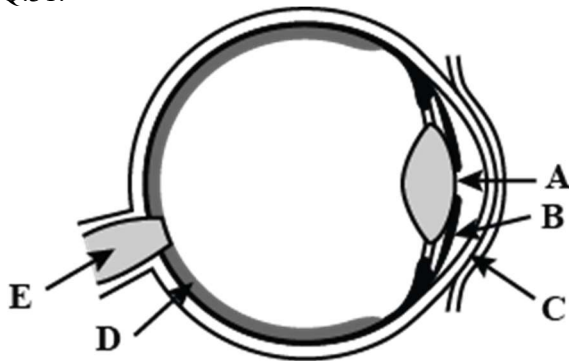
Q.30. What is the angle of incidence of a ray if the reflected ray is at an angle of 90° to the incident ray?

OR

Does pure water conduct electricity? If not, what can we do to make it conducting?

SECTION - C

Q.31.



- Name the parts A, B, C, D, and E.
- The part of the eye is similar as camera film?
- If your eyes are said to be brown, what part of the eye is responsible for the brown color?
- Which part is similar in camera and eye?
- In the retina of the eye, the area having no sensory cells is called:

OR

Sketch larynx and explain its function in your own words.

Q.32. Name the forces acting on a plastic bucket containing water held above ground level in your hand. Discuss why the forces acting on the bucket do not bring a change in its state of motion.

Q.33. With the help of a diagram show the dispersion of white light by a prism.

OR

Write chemical reactions describing the electroplating of copper.

Q.34. Distinguish between myopia and hypermetropia. How can these defects be corrected?

Q.35. Draw a diagram showing the electroplating of copper on an iron spoon.

Q.36. Why is Friction considered a necessary evil?

OR

Explain the working of Human ear.



MAITRI VIDYA NIKETAN EMSSS, RISALI

ANNUAL EXAMINATION 2022-2023

CLASS-VIII SUBJECT- GENERAL SCIENCE

TIME: 3 Hrs.

MM: 80

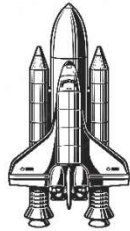
GENERAL INSTRUCTIONS:

- The question paper comprises three sections – A, B and C. Attempt all the sections.
- All questions are compulsory.
- Internal choice is given in each section.
- All questions in Section-A are one-mark questions comprising MCQ, VSA type and assertion-reason type questions. They are to be answered in one word or in one sentence.
- All questions in Section-B are three-marks, short-answer type questions. These are to be answered in about 50 words each.
- All questions in Section-C are five marks, long-answer type questions. These are to be answered in about 70 words each.
- This question paper consists of a total of 36 questions.

SECTION – A

- Q.1. Angle of incidence is equal to the angle of reflection.
(a) Always (b) Sometimes (c) Under special conditions (d) Never
- Q.2. A tester is used to check the conduction of electricity through two liquids, labelled A and B. It is found that the bulb of the tester glows brightly for liquid A while it glows very dimly for liquid B. You would conclude that
(a) Liquid A is a better conductor than liquid B
(b) Liquid B is a better conductor than liquid A
(c) Both liquids are equally conducting (d) Conducting properties of liquid cannot be compared in this manner.
- Q.3. Name the type of force involved in the following:
A coin falling to the ground on slipping from hand.
(a) Frictional force (b) Magnetic force (c) Gravitational force
(d) Electrostatic force
- Q.4. When we press the bulb of a dropper with its nozzle kept in water, air in the dropper is seen to escape in the form of bubbles. Once we release the pressure on the bulb, water gets filled in the dropper. The rise of water in the dropper is due to
(a) Pressure of water (b) Gravity of the earth
(c) Shape of dropper (d) Atmospheric pressure

- Q.5. The astronauts on the surface of the moon cannot talk to each other. Why?
- Because sound cannot travel through air
 - Because sound cannot travel through gases
 - Because sound cannot travel through vacuum
 - Because sound cannot travel through strings.
- Q.6. Which of these bones is in touch with the eardrum?
- Cochlea
 - Anvil
 - Stirrup
 - Hammer
- Q.7. Current is the flow of -
- Electrons
 - Protons
 - Neutrons
 - Both (b) and (c)
- Q.8. Which process the electroscope is charged?
- Induction
 - Friction
 - Conduction
 - None of these
- Q.9. Which force(s) act on the rocket immediately after leaving the launching pad?



- Upward force applied by the rocket fuel
 - Downward gravitational force applied by the earth
 - Upward muscular force applied by hand
 - Both (a) and (b)
- Q.10. The amount of light entering the eye is controlled by -
- Eye-lens
 - Cornea
 - Iris
 - Ciliary muscle
- Q.11. A car is moving towards North. What will be the direction of force of friction acting on this car due to surface of road?
- Q.12. On which principle, the kaleidoscope is based?
- Q.13. Name the device used for protection of high rise buildings.
- Q.14. The force of friction decreases with (i) _____ in interlocking between the surfaces in contact and it increases with (ii) _____ in the pressing force between the surfaces. Complete the given information.
- Q.15. How many images of a candle will be formed if it is placed between two parallel plane mirrors separated by 40 cm?
- Q.16. Electrolysis is a chemical change. (True / False)
- Q.17. Name the scale on which the destructive energy of an earthquake is measured.
- Q.18. How many dot patterns are in the Braille system?

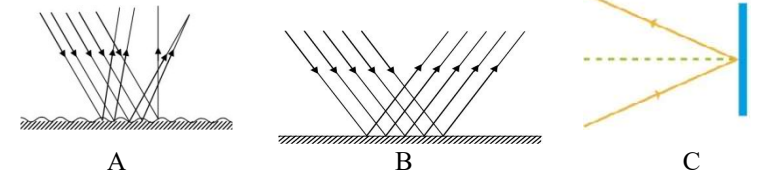
Direction: For **question numbers 19 and 20** two statements are given – one labelled Assertion (A) and other labelled (R). Select the answer to these

questions from the codes (a), (b), (c) and (d) as given below.

- Both A and R are true and R is the correct explanation of the A.
 - Both A and R are true but R is not the correct explanation of the A.
 - A is true but R is false
 - A is false but R is true.
- Q.19. **Assertion:** When electricity is passed through acidified water, it decomposes into hydrogen and oxygen gases.
- Reason:** The word electrolysis means breaking up by the action of electricity.
- Q.20. **Assertion:** The loudness of sound increases if the vibrating area of the body is increased.
- Reason:** Lower the pitch, the shriller is the sound.

SECTION - B

- Q.21. How many images of an object will be formed when the object is placed between two plane mirrors which are inclined at the following angles to one another? (any 3)
- 120°
 - 180°
 - 60°
 - 90°
- Q.22. Prepare a list of objects around you that are electroplated.
- Q.23. Draw a well labelled diagram of Layers of Earth.
- Q.24. Explain why sliding friction is less than static friction.
- Q.25. State the laws of reflection.
- Q.26. Why is direct current used in electroplating?
- Q.27.



- Identify the figure which shows- i) regular reflection ii) Irregular reflection
 - Write any two differences between regular and irregular reflection.
- Q.28. Explain in what way noise pollution is harmful to human.
- Q.29. An inflated balloon was pressed against a wall after it has been rubbed with a piece of synthetic cloth. It was found that the balloon sticks to the wall. What force might be responsible for the attraction between the balloon and the wall?

OR

What is the difference between noise and music? Can music become noise sometimes?

